



ECONOMIC OBJECT WITH LAND

MUNICIPALITY OF BIJELO POLJE

APS
Montenegro

The property is located in the municipality of Bijelo Polje, in the part of the suburban settlement of Babić Brijeg, which is located west of the city center at a distance of 2.3 km. The property is located along the local road and is well connected with the city.

The airport in Tivat is 197 km away from Bijelo Polje, and the airport in Podgorica is 122 km away.

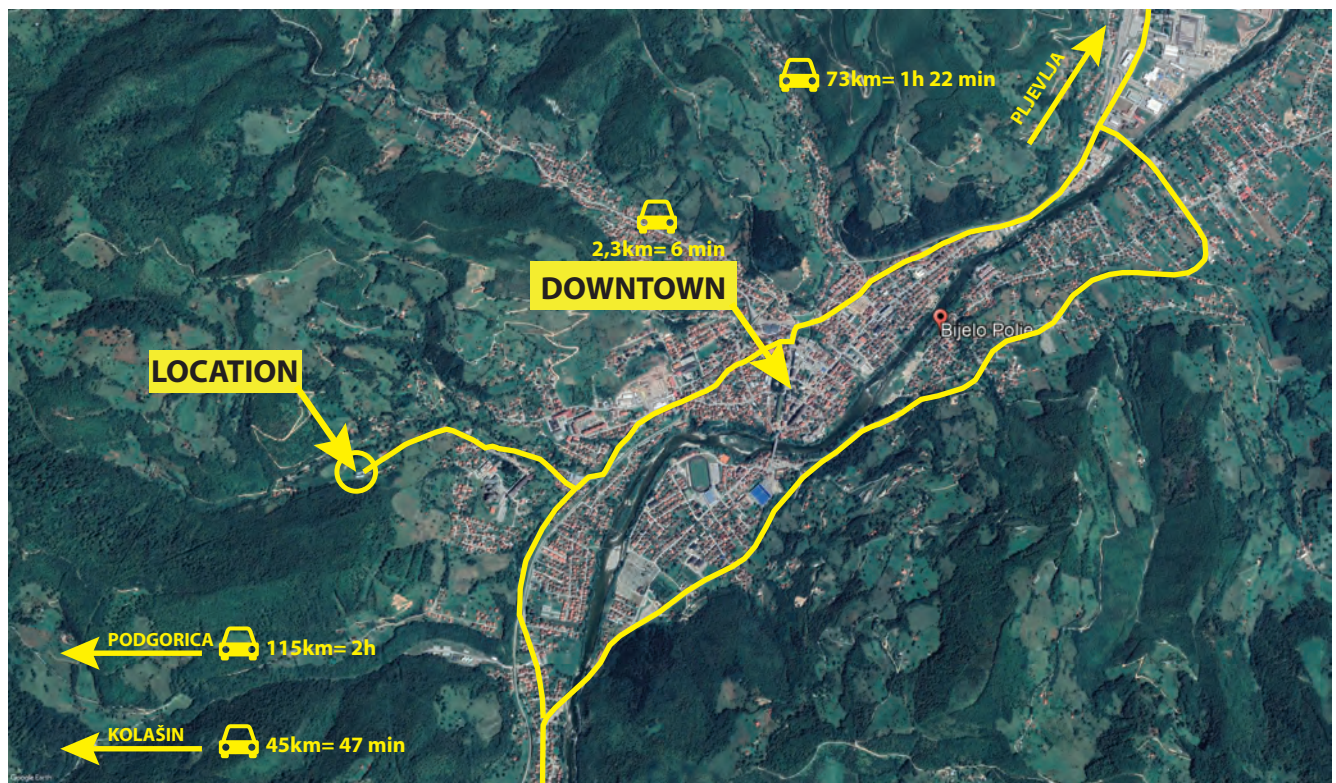
DISTANCE FROM:

- City center: 2.3 km
- Bus station: 2.4 km
- Hospital: 1 km

MUNICIPALITY-----BIJELO POLJE
 CADASTRAL MUNICIPALITY-----KO BIJELO POLJE
 PROPERTY AREA-----181m²
 PROPERTY PRICE IN EUR-----ON REQUEST
 ID NUMBER-----ME10283B01001



View cadastral plot with a house (GeoPortal Montenegro)



The real estate is a ground floor commercial building, which was made as a production plant for the production of PVC hardware and was built in two parts. The first part consists of a basic building of 98m² and a second part of a fenced annex of 83m². The building is built of reinforced concrete in combination with masonry elements and is in good condition.

Parking space is provided inside the plot.

The property is equipped with all available utilities, such as electricity, low voltage network, water and sewage.

**FACILITY SUITABLE FOR STARTING PRODUCTION;
GOOD TRAFFIC CONNECTION WITH THE CITY;**

APS

Montenegro

APS Montenegro d.o.o.
Cetinjska 11, The Capital Plaza 4-th floor
81 000 Podgorica, Montenegro
me-public@aps-holding.com

+382 20 408 500